

# Route 65: THE REBUILD

## Springfield, MO



# Original Pavement from early 1970s





Here's what we were dealing with



So what are the options?



# Asphalt Overlay?

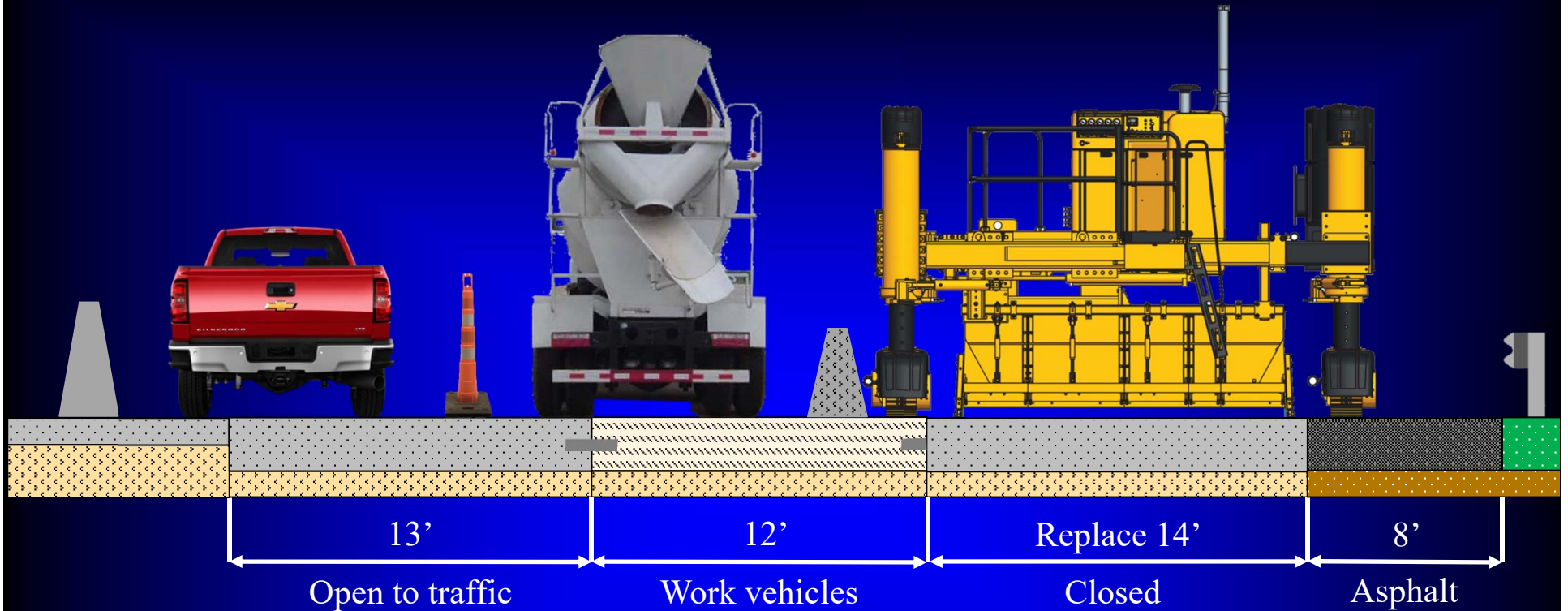


# Concrete Pavement Repair?

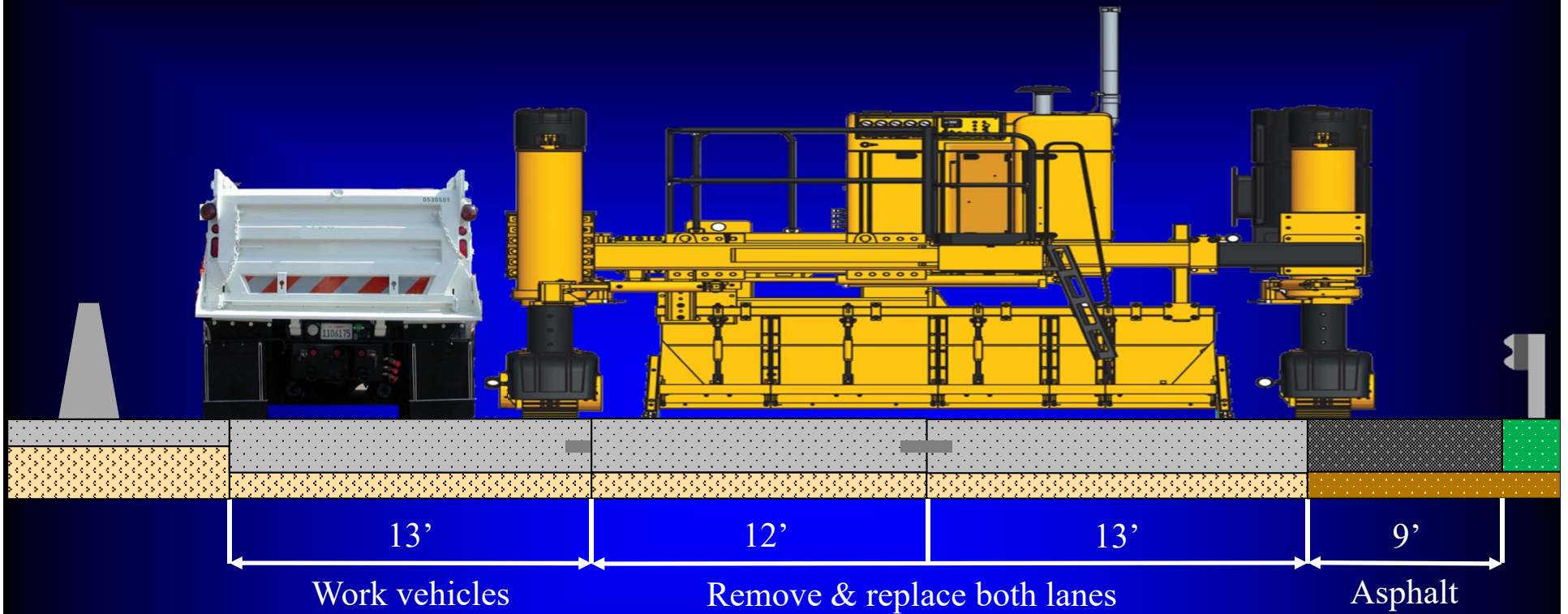




# Concrete Pavement Replacement with Barrier Wall?



# Concrete Pavement Replacement With Full Closing?





# Magic Bullet

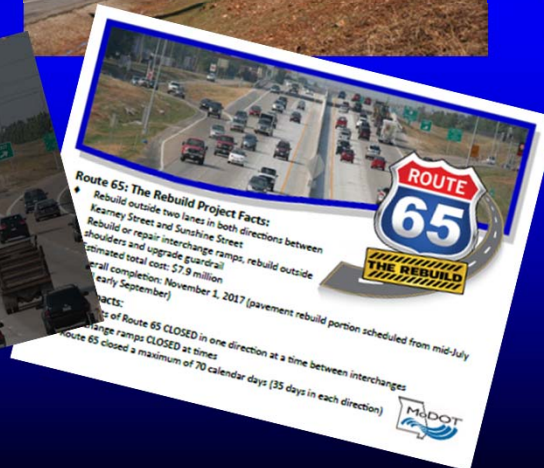
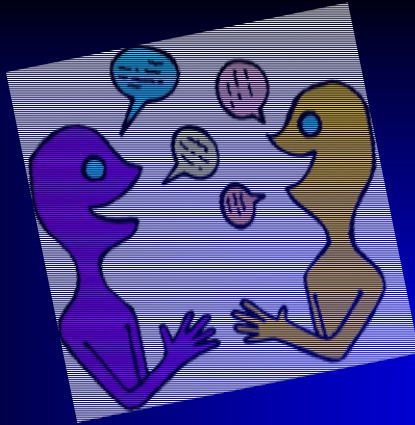
**Contractor Incentive**



**Contractor Disincentive**

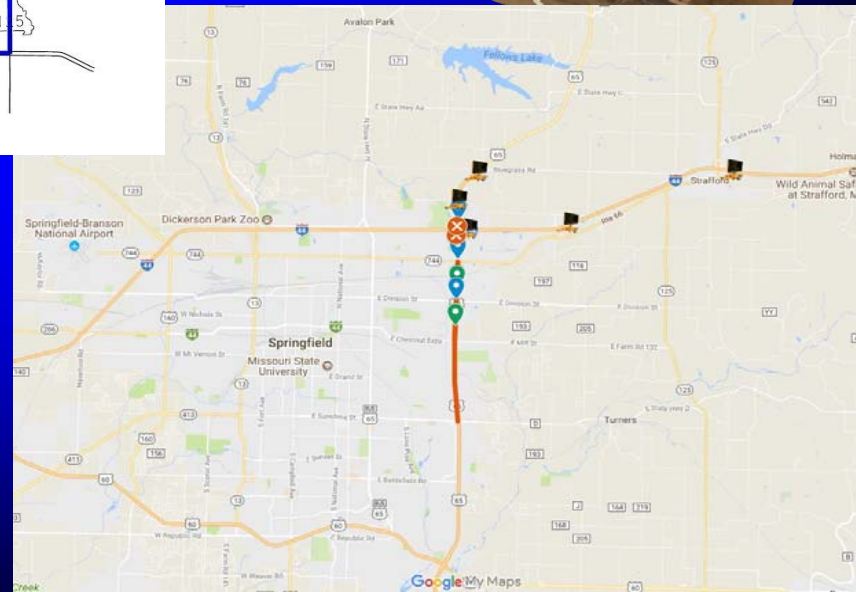
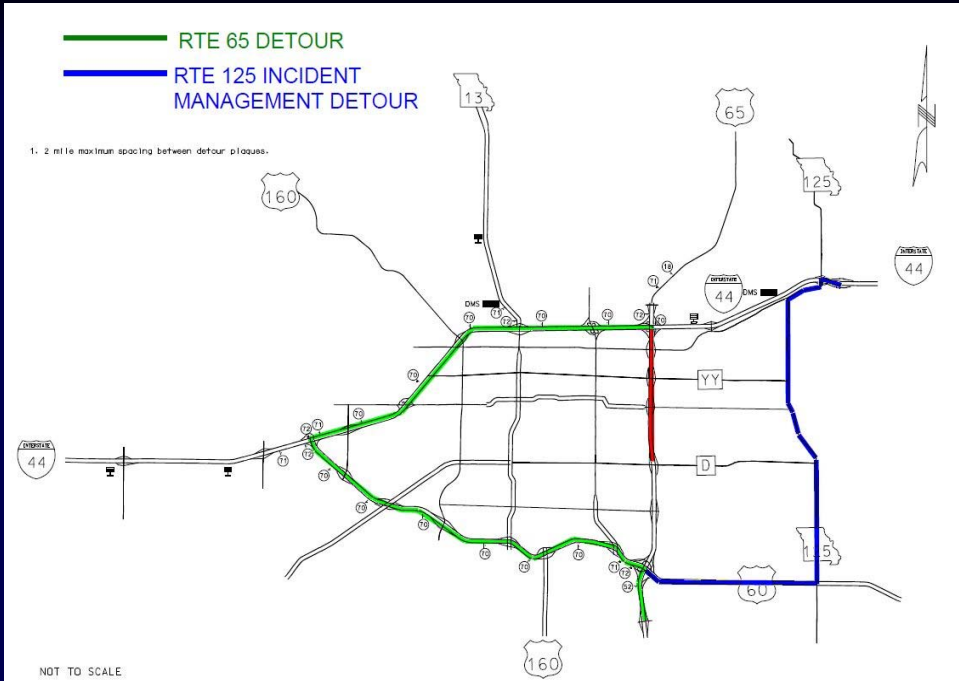


# Keys to Success = Communication





# Keys to Success = Traffic Control

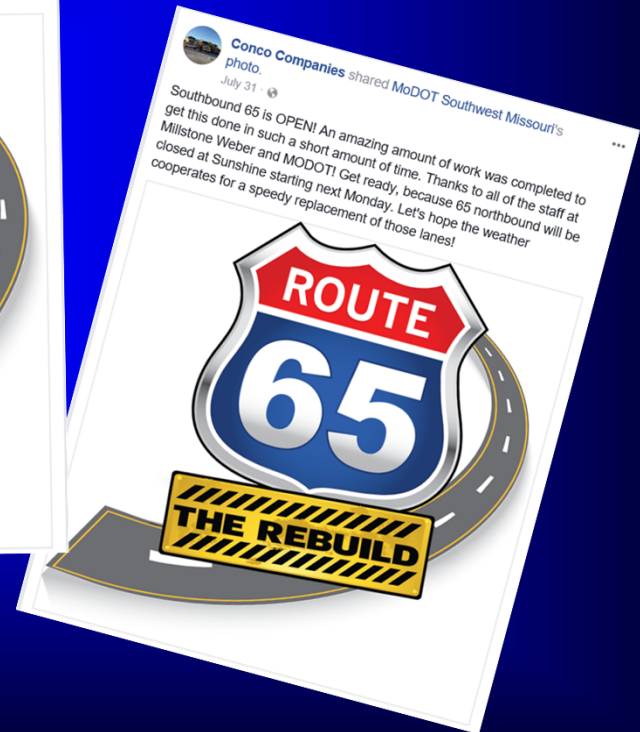


# Keys to Success = Engagement



Springfield-Greene County Office of Emergency Management shared MoDOT Southwest Missouri's post.  
August 18 · 🌐

The Route 65 Rebuild project is nearing completion - kudos to our partners at MoDOT Southwest Missouri for this successful undertaking! Check out the latest details below. 🚧





# Route 65: THE REBUILD

## Construction Phasing/Staging

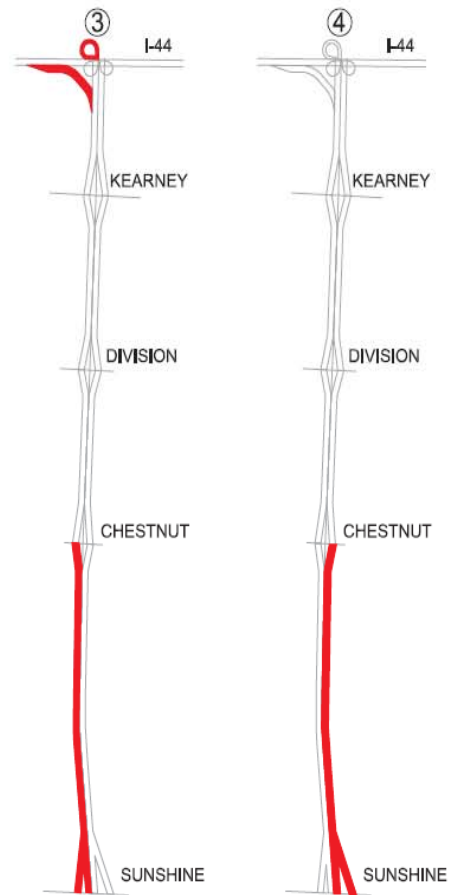
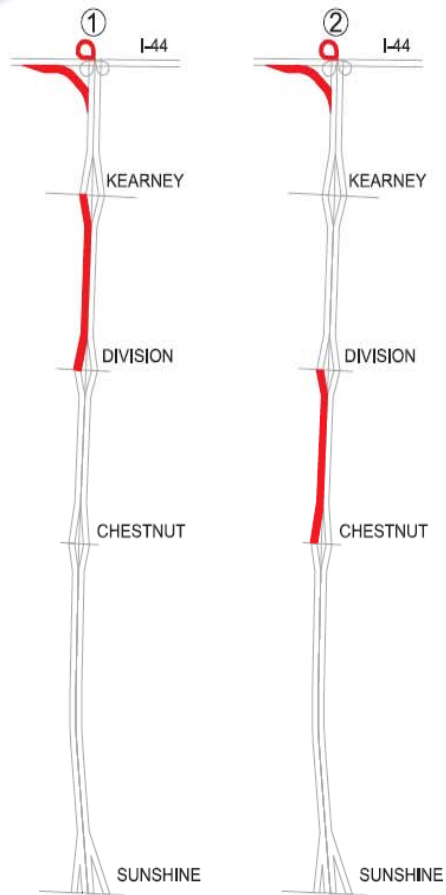


# Phasing

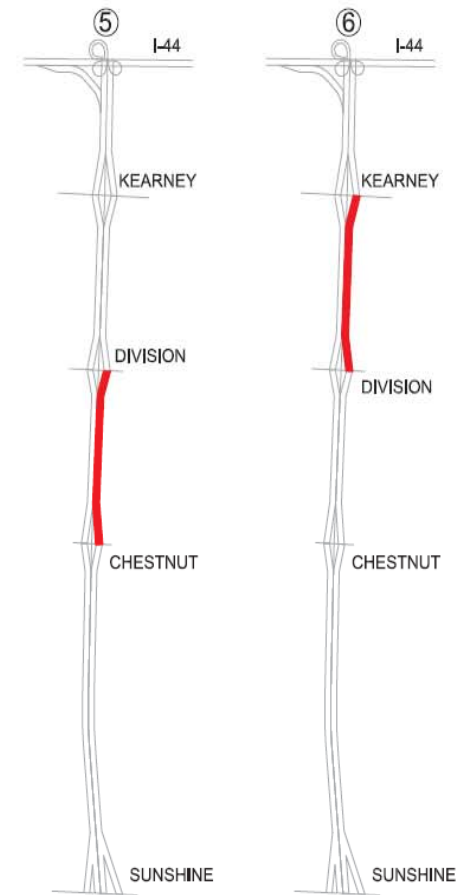


## US65 Stage Closures

### SOUTHBOUND



### NORTHBOUND



# Phasing

[illegible][illegible]



# 7 Day Schedule

Stage 1 - SB 65 Kearney St. to Division St.	
<b>Sunday PM</b>	
Lane Closures	RoadRunner
Pavement Breaking	Antigo
Overhead Signs Covered	
<b>Monday</b>	
Trackhoes Begin Removals	
Trackhoes Load Pavement	
Small Setup Crew Bring Baskets and Bars from BP with	
Grading Base Rock	
Gangdrill Operation	
<b>Monday PM</b>	
Mobilize Pavers Into Place	
<b>Tuesday</b>	
Trackhoes Load Pavement	
Grading Base Rock	
Gangdrill Operation	
Set Baskets / Epoxy Tie-Bars / Drill Headers / Pour BAS	
Layout Cure & Centerline Bars	
<b>Tuesday PM</b>	
Mainline Concrete Pour #1	2030 CY
Sawcut Joints	PCS
<b>Wednesday</b>	
Trackhoes Load Pavement	
Grading Base Rock	
Gangdrill Operation	
Set Baskets / Epoxy Tie-Bars / Drill Headers	
Layout Cure & Centerline Bars	
Clean-Up	
<b>Wednesday PM</b>	
Profiligraph Pour #1	QC
Mainline Concrete Pour #2	2400 CY
Sawcut Joints	PCS

Stage 1 - SB 65 Kearney St. to Division St.	
<b>Thursday</b>	
Grading Base Rock Ramps	
Set Baskets / Epoxy Tie-Bars / Gore Forms	
Clean-Up	
<b>Thursday PM</b>	
Profiligraph Pour #2	QC
Ramp Concrete Pour #3	250 CY
Sawcut Joints	PCS
<b>Friday</b>	
Grading Base Rock Ramps	
Set Baskets / Epoxy Tie-Bars / Gore Forms	
Pre-Load High-Deck with Baskets	
Cut Cores in ML Pour #1 & #2	QC
Clean-Up	
<b>Friday PM</b>	
Ramp Concrete Pour #4	270 CY
Sawcut Joints	PCS
<b>Saturday</b>	
Edge Treatment	
Clean-Up	
<b>Sunday PM</b>	
Open Lane Closures	RoadRunner

# Maturity Method

- Maturity Curve Established to Determine Strength of Concrete
  - 32 Hours Average for 2500 PSI



# Route 65: THE REBUILD

## Construction





# Construction Sequencing

- Traffic Switch
- Pavement Rubbilization
- Pavement Removals
- Base Rock
- Concrete Setup
- Mainline Pours
- Ramp Pours

# Quantities Highlights

- 7 Miles of Roadway
- 35,000 CY of Concrete
- 110,000 SY of 10" Concrete Pavement
  - 14 Mainline Pours
  - Average Mainline Pour 2800 LF
  - 11 Ramp Accel/Decel Pours

# Quantities Highlights

- Total Manhours - 23,000 MH
- Total Trucking Hours
  - Pavement Removals - 3200 Hours
  - Concrete Batching - 3000 Hours



# Traffic Switch



# Pavement Rubbilization





# Pavement Rubbilization





# Pavement Rubbilization





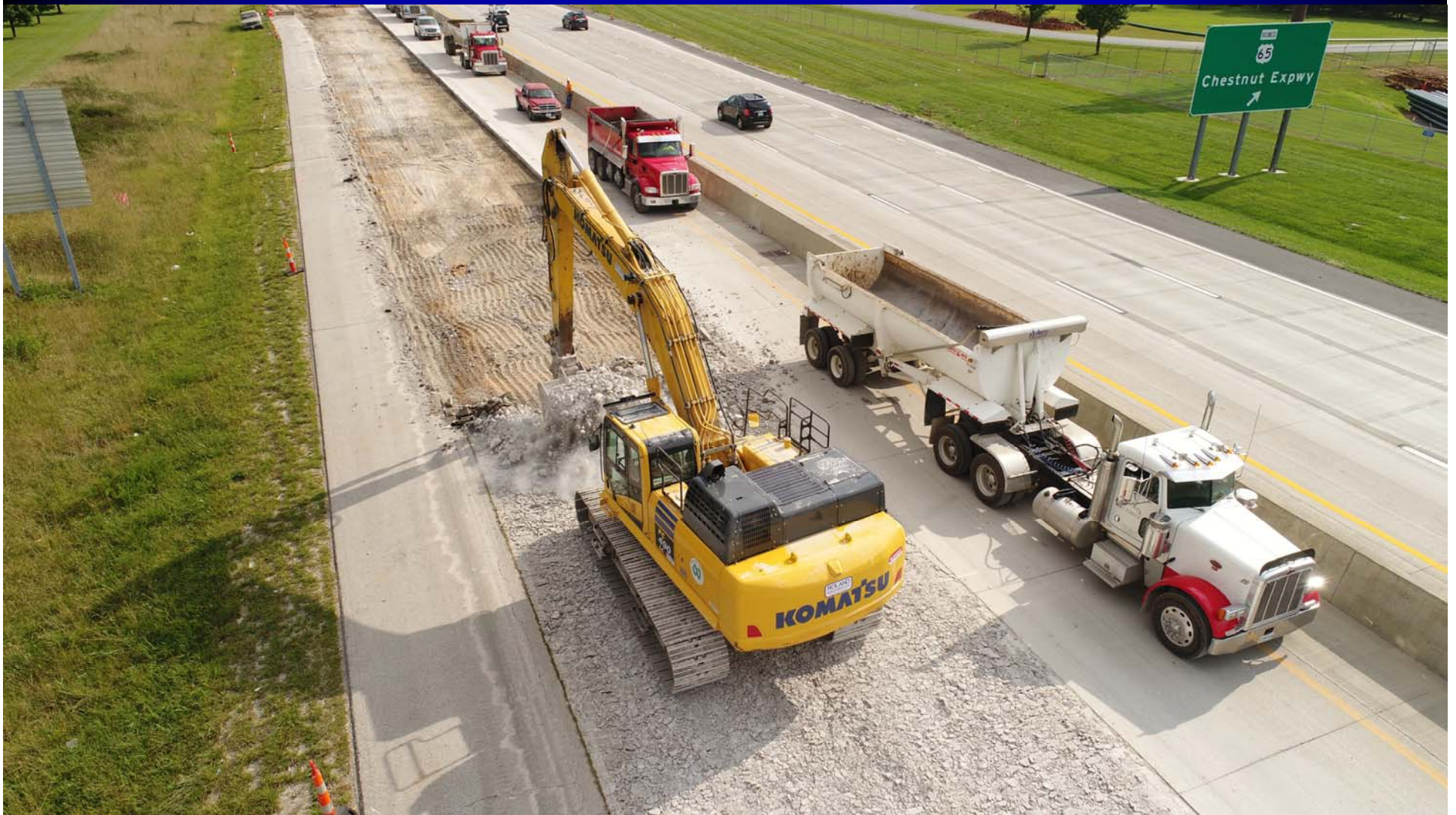
# Pavement Removals



**MILLSTONE  
WEBER**



# Pavement Removals





# Base Rock



**MILLSTONE  
WEBER**



# Base Rock





# Concrete Setup





# Concrete Setup





# Concrete Setup



**MILLSTONE  
WEBER**



# Mainline Paving



**MILLSTONE  
WEBER**



# Mainline Paving



**MILLSTONE  
WEBER**



# Mainline Paving



# Mainline Paving



MILLSTONE  
WEBER



# Leica Stringless Paving



**MILLSTONE  
WEBER**

# Ramp Paving



**MILLSTONE  
WEBER**



# Ramp Paving



**MILLSTONE  
WEBER**



# Concrete Plant



**MILLSTONE  
WEBER**



# Major Subcontractor Items

- Guardrail
- Pavement Repairs
- Shoulder Mill & Fill

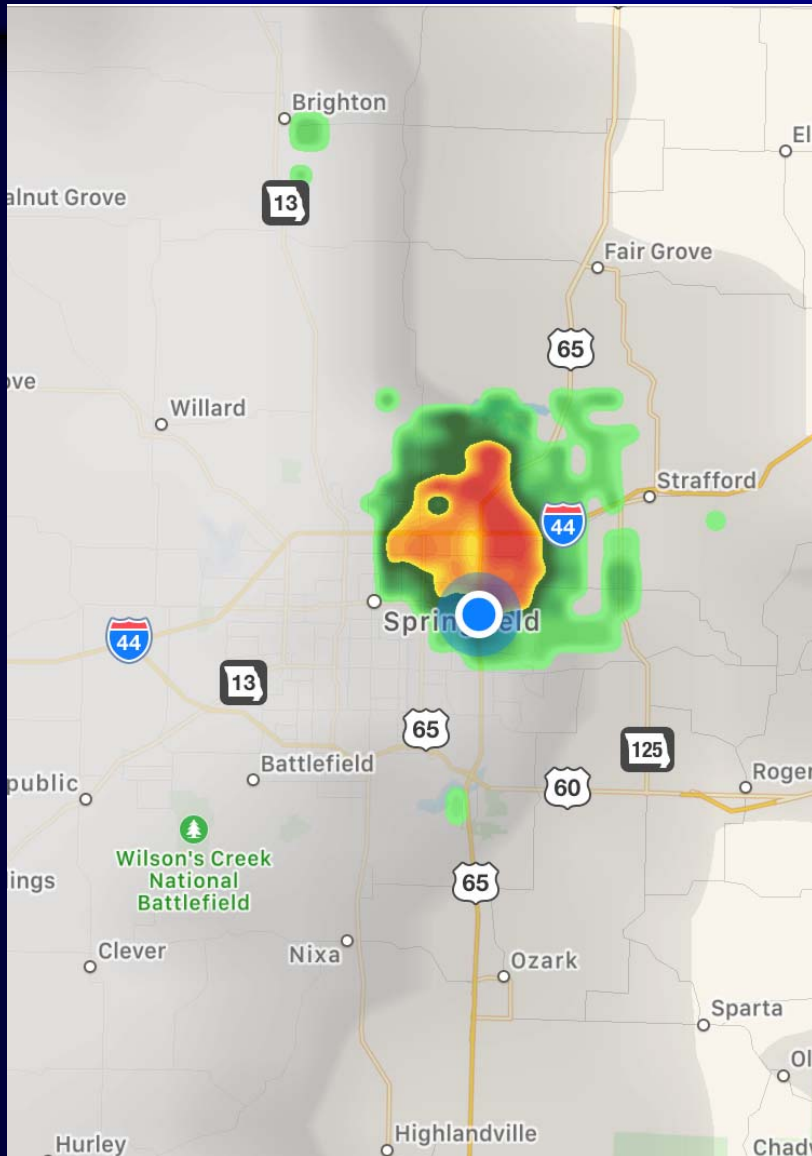


# Challenges

- Weather
  - Rain
  - Heat
- Soft Spots
- Landlocked
- Traffic



# Challenges



# Challenges

SUN 7/16	MON 7/17	TUE 7/18	WED 7/19	THU 7/20	FRI 7/21	SAT 7/22
Actual Temp 91°/68°	Actual Temp 93°/68°	Actual Temp 92°/70°	Actual Temp 94°/70°	Actual Temp 96°/72°	Actual Temp 97°/72°	Actual Temp 98°/73°

- Heat Index Over 100°



# Challenges





# Challenges





# Challenges

- Soft Spots
  - Removed Existing Material
  - Replaced with Rock Fill Base



# Challenges

- Landlocked
  - One Way In / One Way Out





# Challenges

- Traffic



# Route 65: THE REBUILD Successes





# Successes

- Completed in 42 Days! 10 Days ahead of schedule
- Communication
  - Project Team
  - Public Outreach (Twitter/Emails)
- Minimal Traffic Congestion
- Incentives

Final Product





# Successes

- Partnership of Project Team
  - Constant Communication
  - Swift Solutions
  - Coordination of Subcontractors

# Coordination of Major Subcontractors and Suppliers





# Partnering with local law enforcement



# Route 65: THE REBUILD

Your questions

