

Antigo Construction Family of Companies



Crack & Seat Airport Pavements – Project Examples

Mid-Delta Airport, Greenville, MS T/W E Rehabilitation , April 2015



Contractor: APAC-Mississippi, Inc.
Cracked 9,110 Square Yards of 12" Thick JPCP



Runway Area: 1060' x 78'

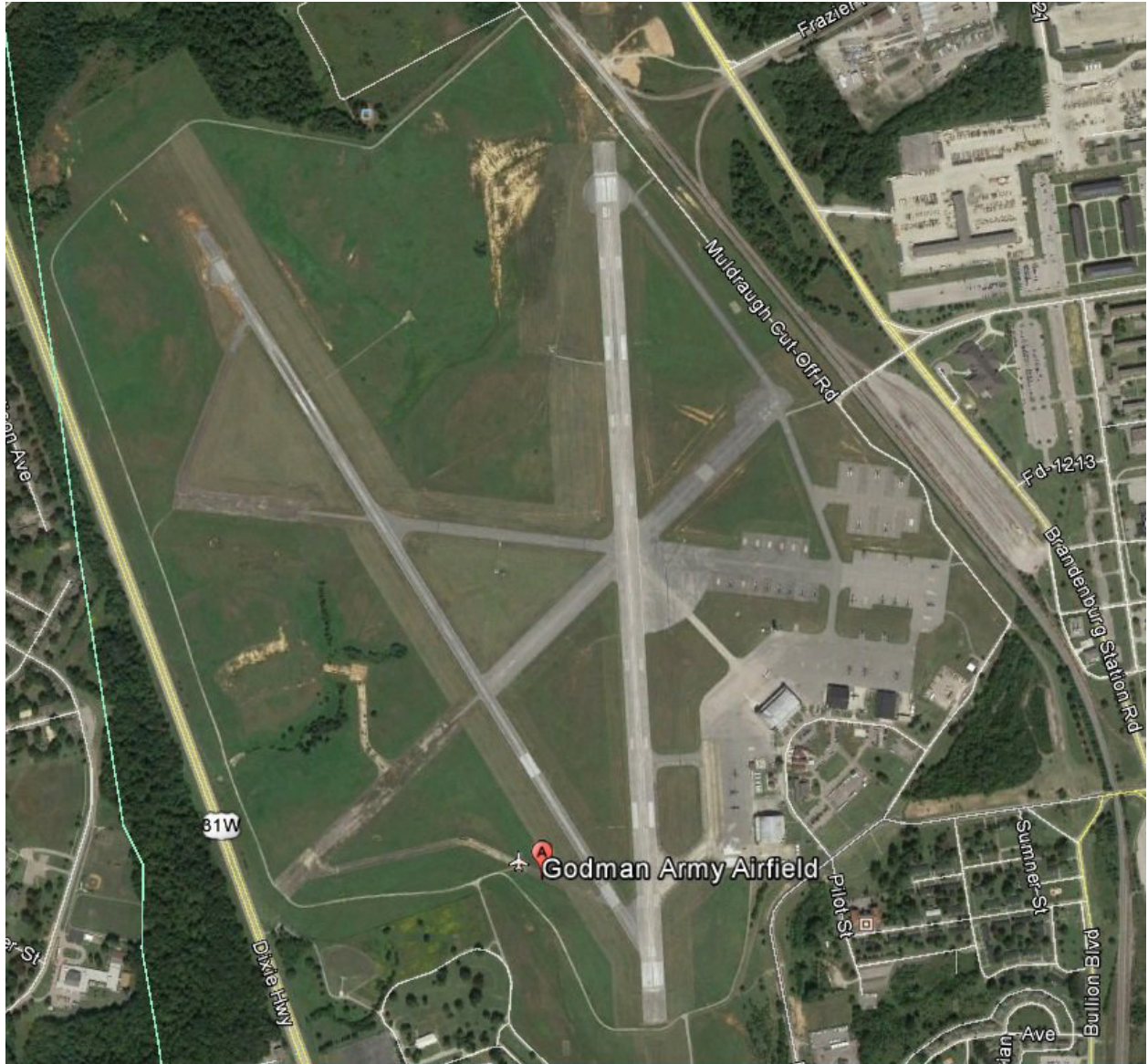


Cracked with T8600 Badger Breaker®



22" strike spacing

Godman Army Airfield, Fort Knox, KY Green Ramp, August 2014



Contractor: Scotty's Contracting & Stone, LLC
Cracked 13,095 Square Yards of 8" Thick JPCP
Plans by: U.S. Army Engineer District

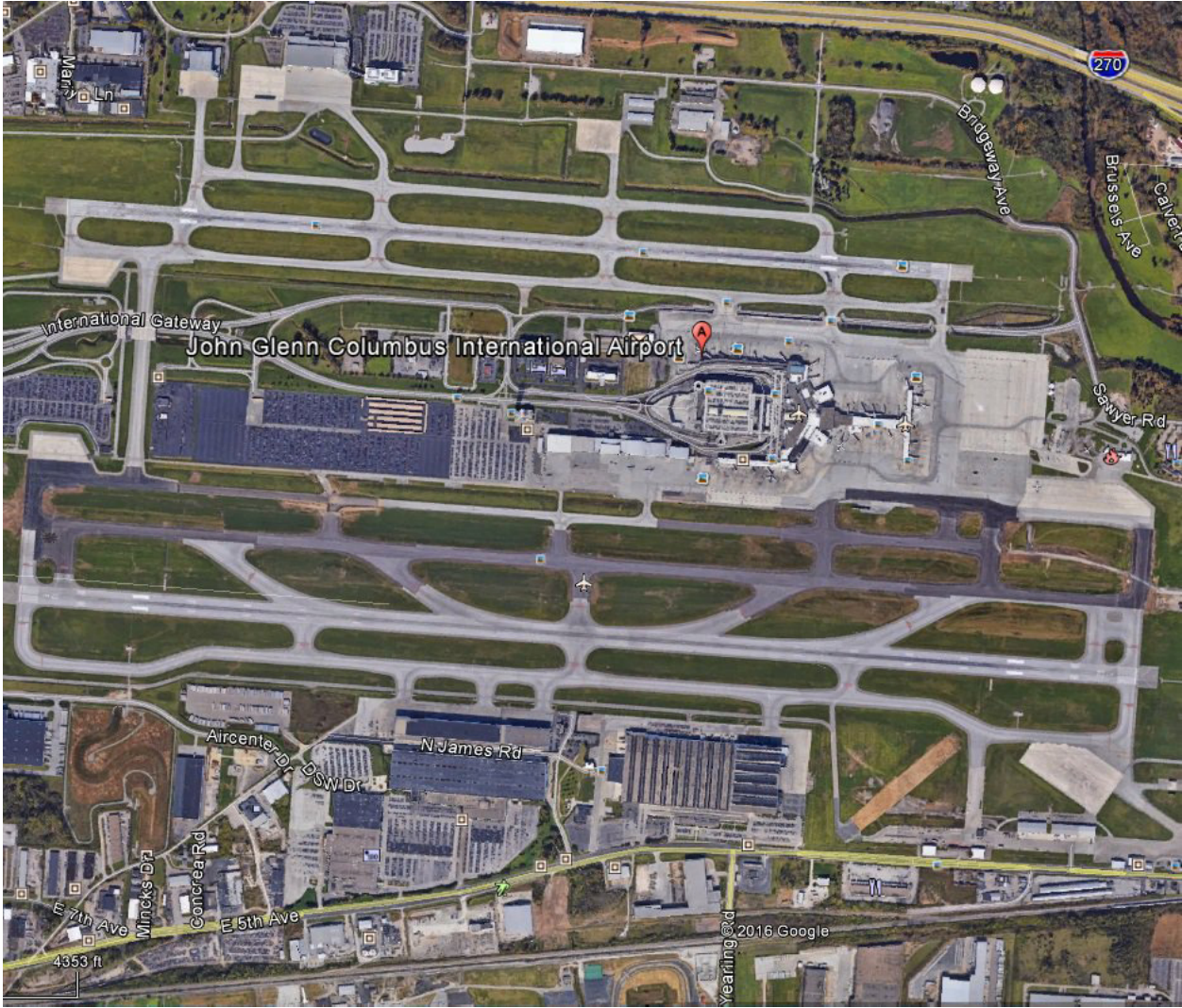


Cracked with T8600 Badger Breaker®



22" strike spacing

**Port Columbus Int'l Airport, OH Convert R/W 10R/28L to T/W C,
September 2013**



Contractor: George J. Igel & Co., Inc.
Cracked 17,899 Square Yards of 6"-15" Thick JRCP
Plans by: CH2MHILL

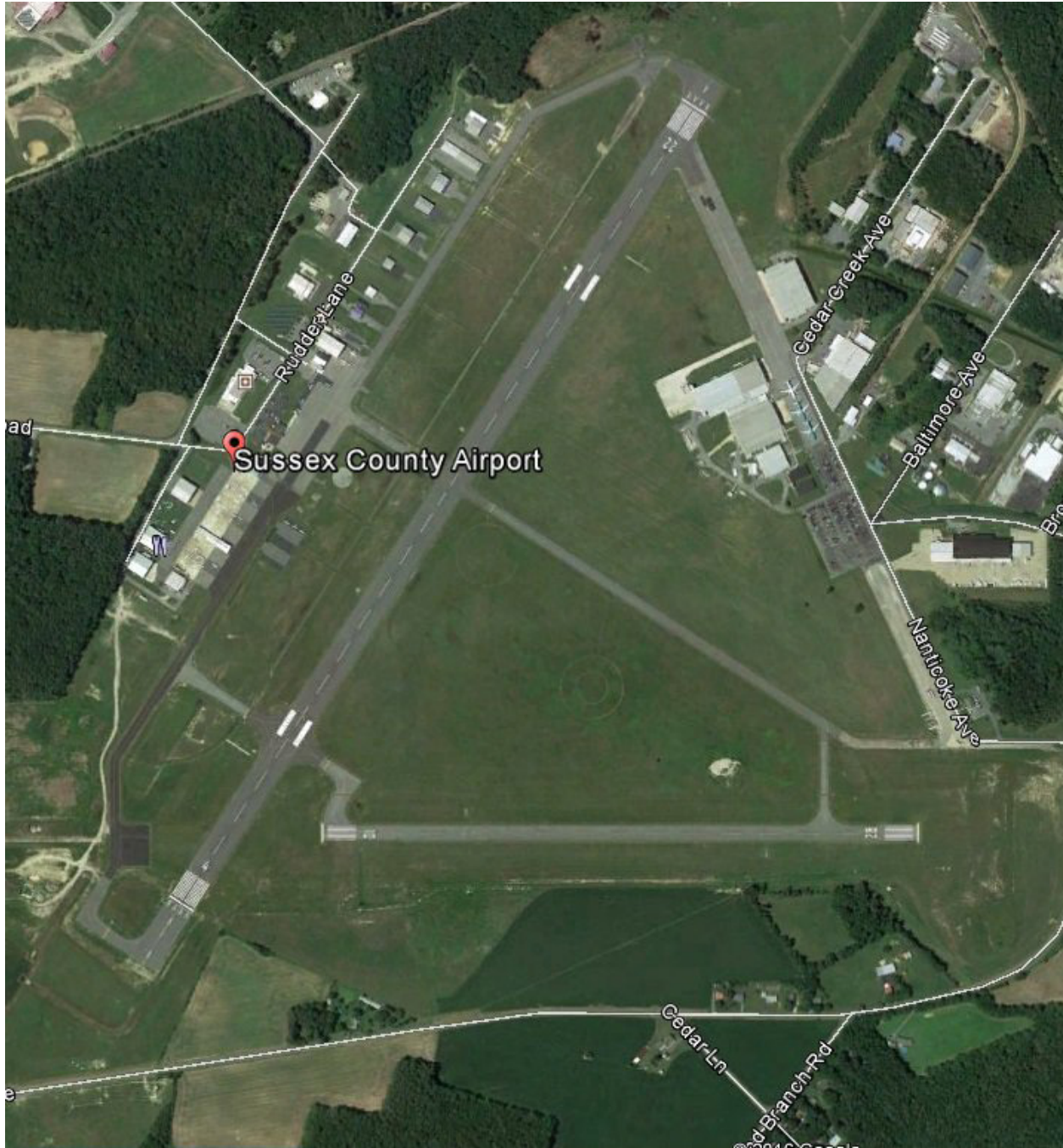


Cracked with T8600 Badger Breaker®



22" strike spacing

Sussex County Airport, Georgetown, DE T/W B, July 2012



Contractor: David A Bramble, Inc.
Cracked: 11,556 Square Yards of 7" Thick JPCP
Plans by: Sussex County Engineering Department



Prior to cracking



Test core

What can Antigo do for you?

In addition to providing quotations and answering any questions you may have, Antigo is prepared to provide a wide range of information on concrete pavement rubblizing, cracking/breaking & seating, and breaking for removal. Examples of available materials are videos of various breaking processes and project scenarios, lists of owner and contractor contacts familiar with Antigo's capabilities, long-range pavement performance surveys, rubblizing and cracking/breaking & seating specifications, and project histories.

Antigo's experienced staff is always available to provide consultation to owners, engineers, and contractors as they plan concrete pavement rehabilitation and reconstruction projects.

Antigo Construction Family of Companies

Corporate Office

Address: Antigo Construction, Inc.
2520 Clermont St
Antigo, Wisconsin 54409
Phone: +1 715-627-2222
Fax: +1 715-623-7073
Email: ac@antigoconstruction.com

Western Division

Address: Antigo Construction, Inc.
1973 Commerce Ave
Boise, Idaho 83705
Phone: +1 208-345-1790
Fax: +1 208-342-0173
Email: west@antigoconstruction.com

International

Contact Person: Joseph A. Grainger, Vice President
and General Manager
Address: Antigo International Inc.
2520 Clermont St
Antigo, Wisconsin 54409
Phone: +1 312-805-4388
Email: ai@antigoconstruction.com

In the UK and Ireland

Address: Antigo MHB Breakers Ltd
Unit 114 Boston House
Grove Business Park
Wantage, Oxfordshire OX12 9FF
United Kingdom
Phone: +44 (0)1235 869021
Fax: +44 (0)1235 869022
Email: amb@antigoconstruction.com